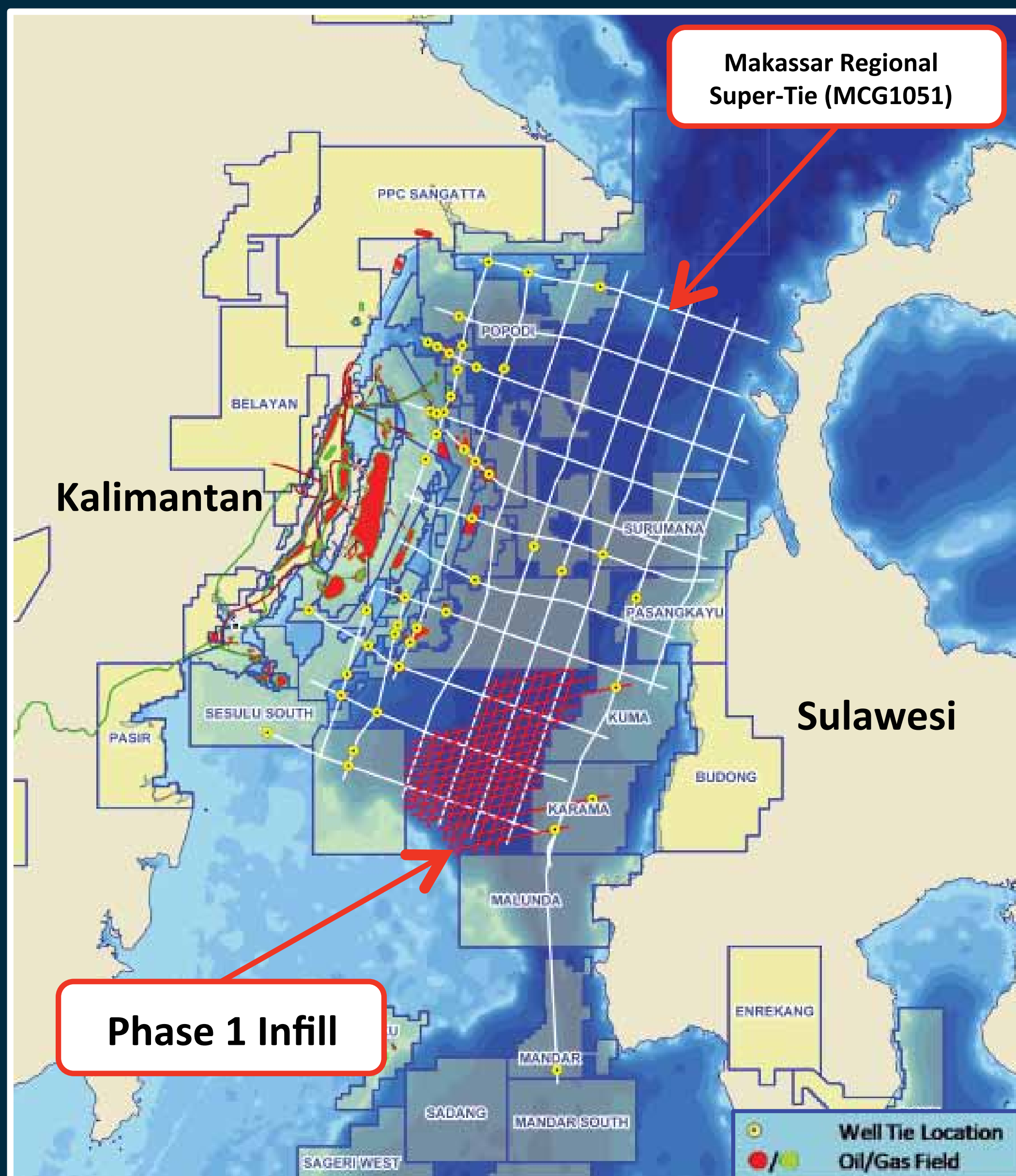


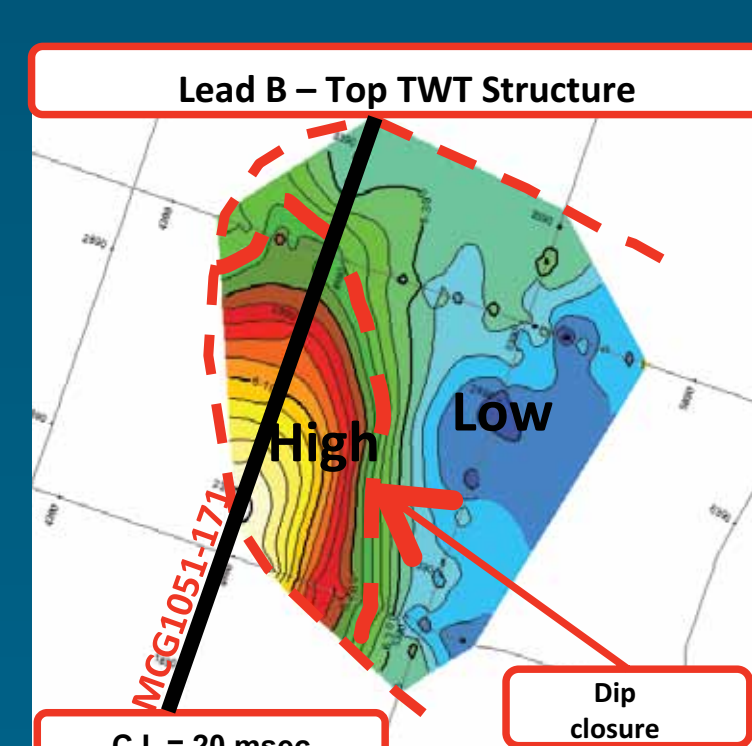
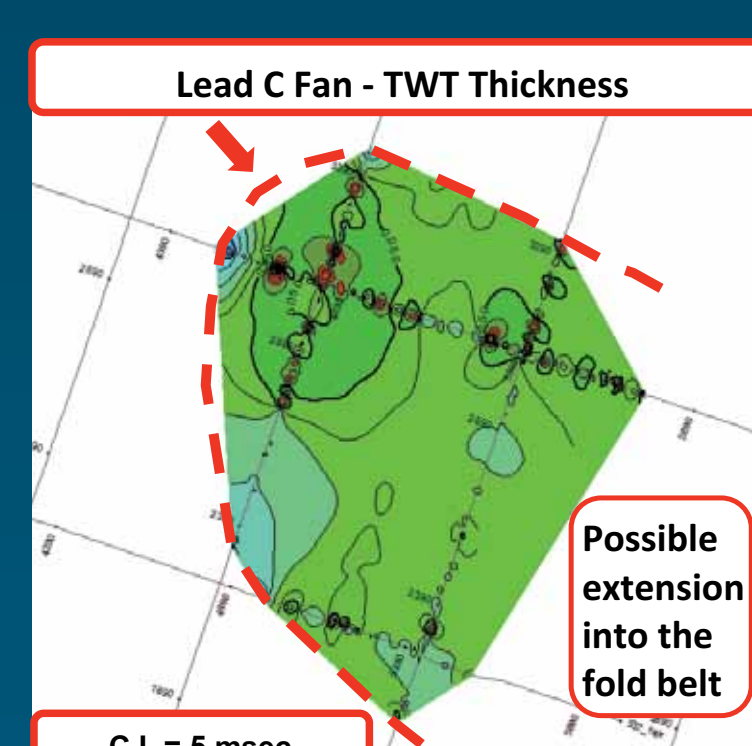
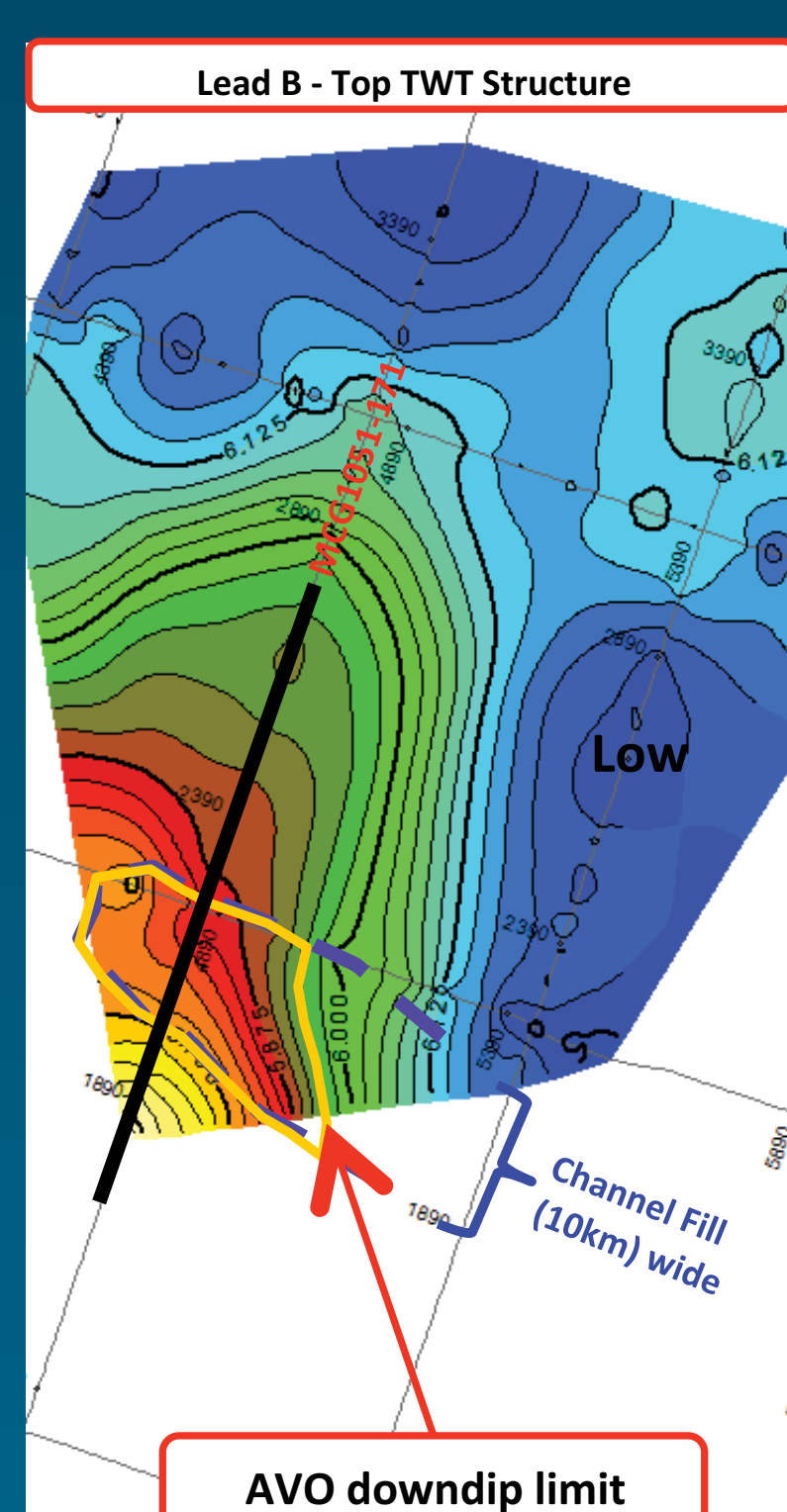
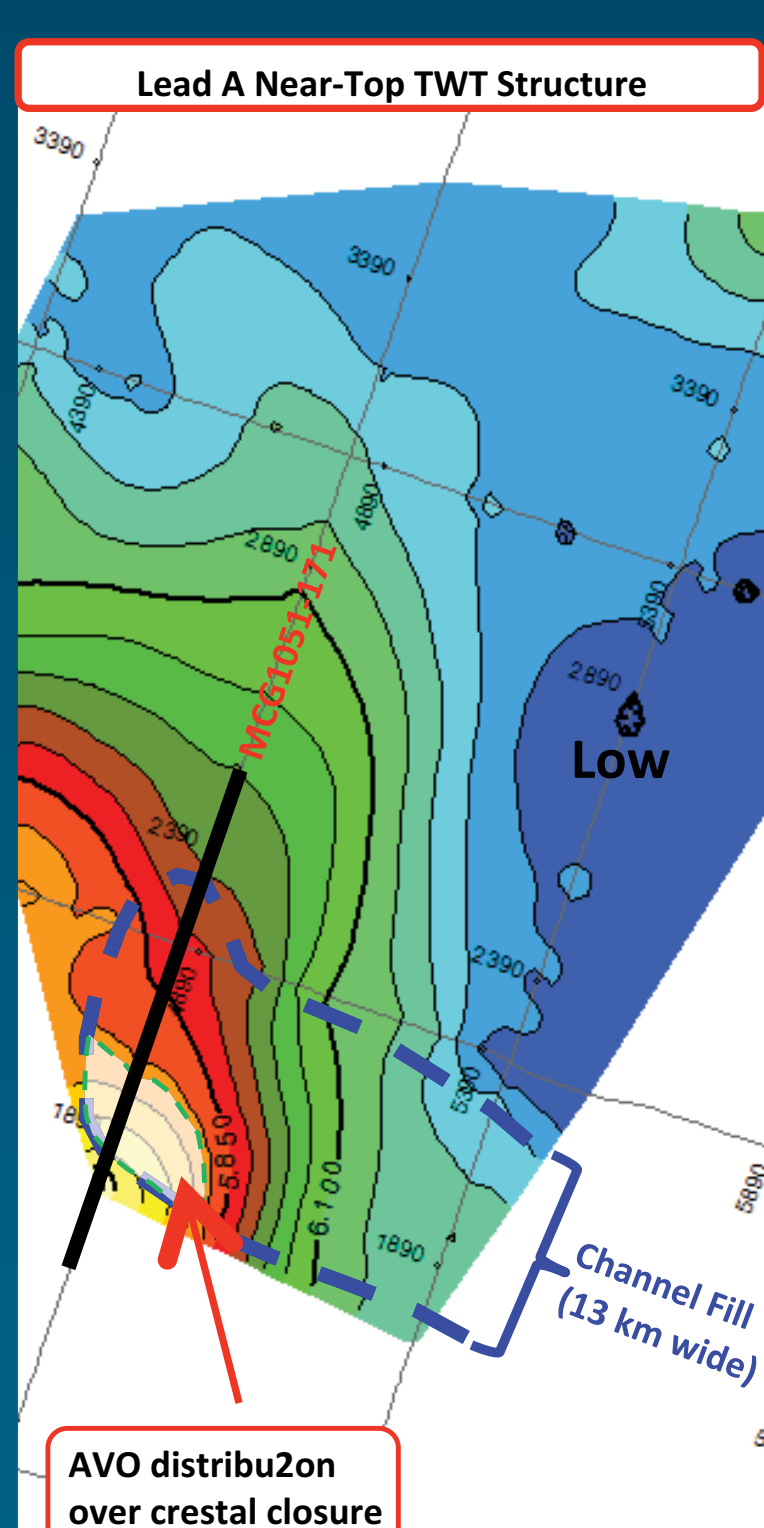
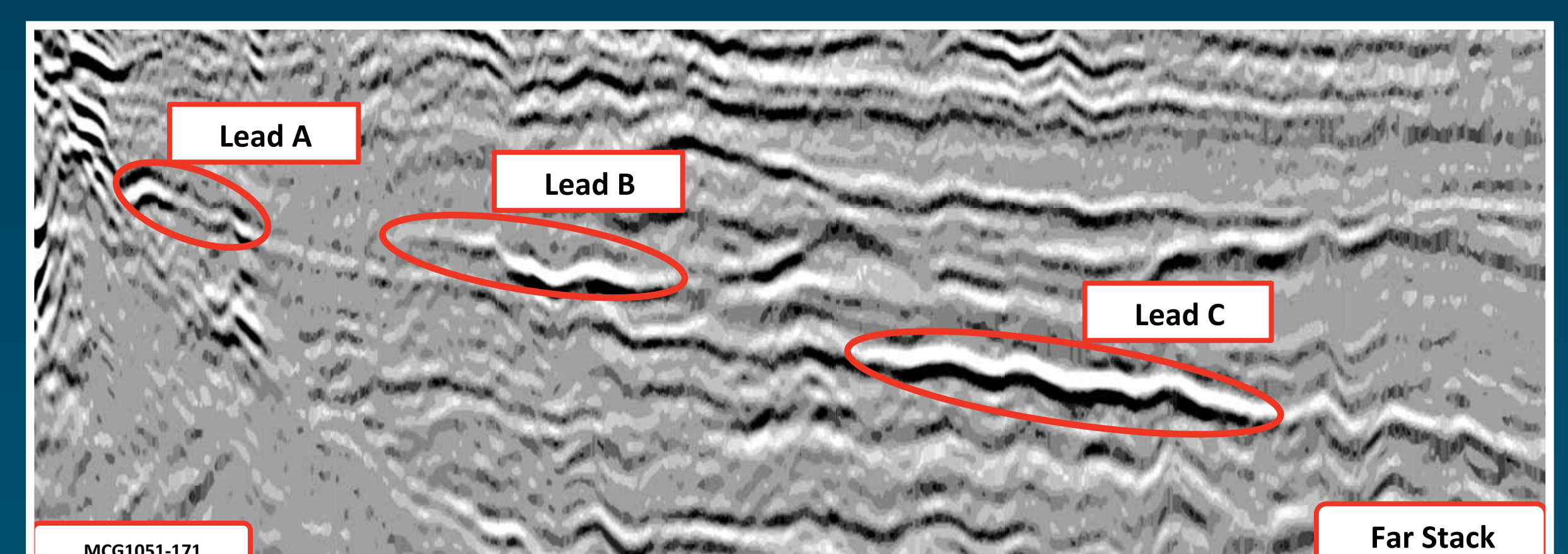
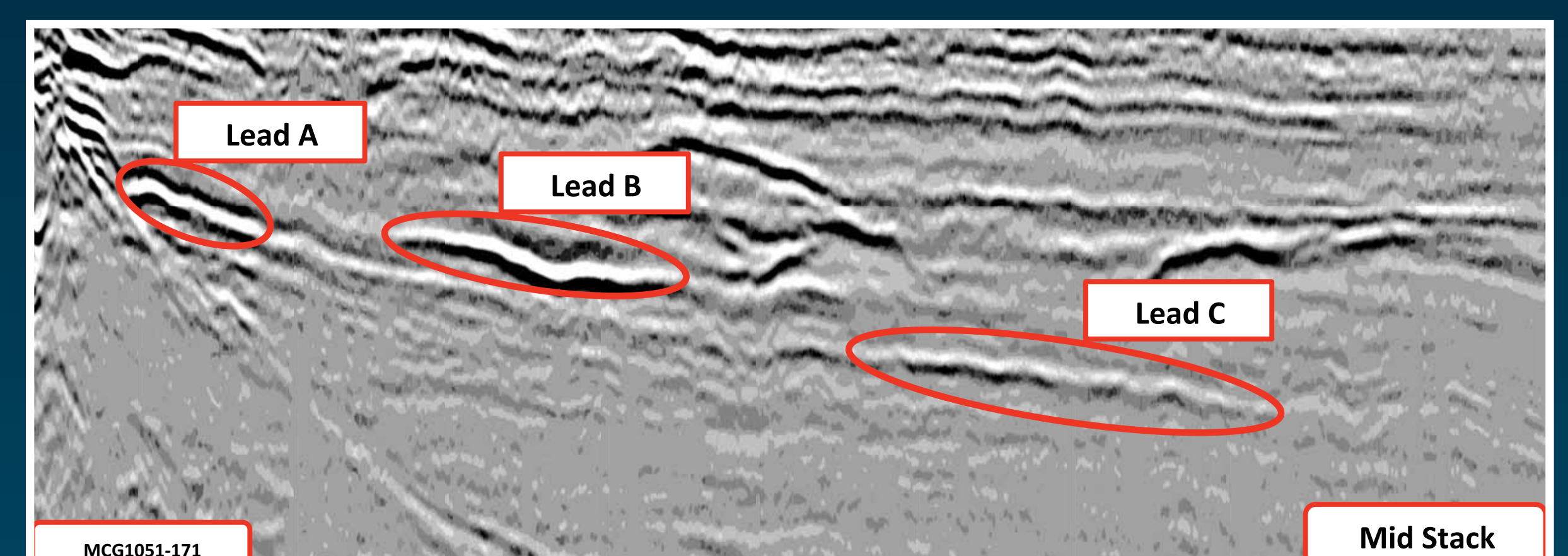
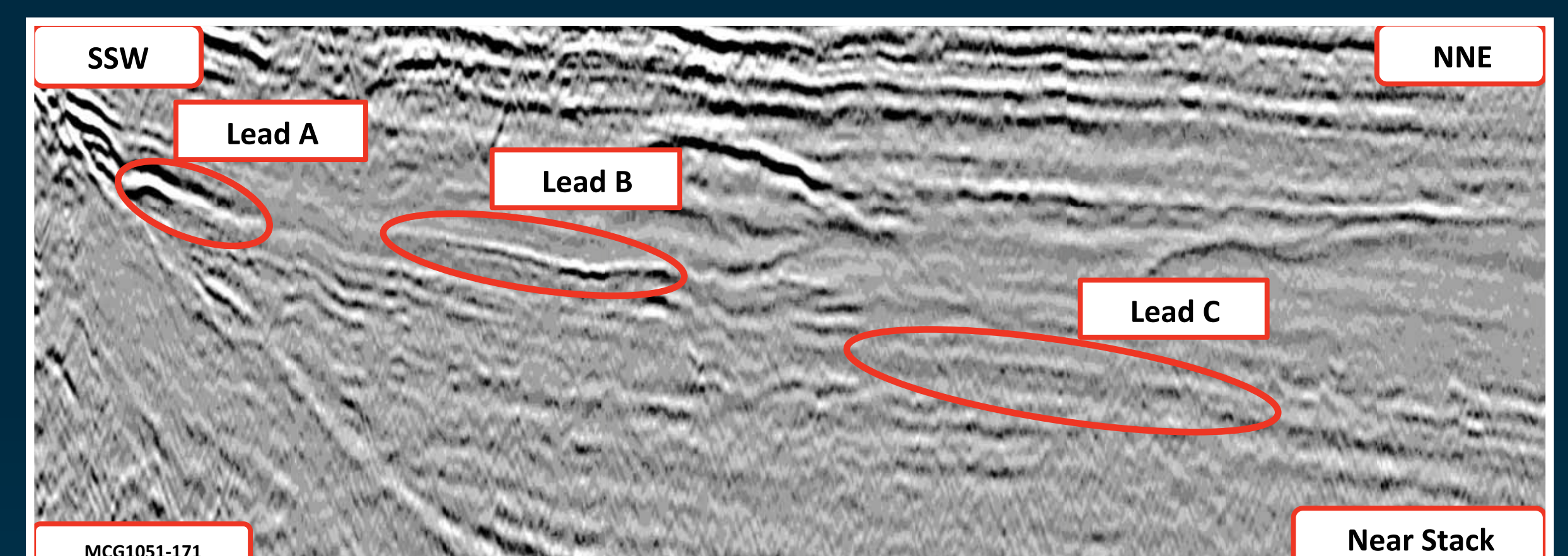
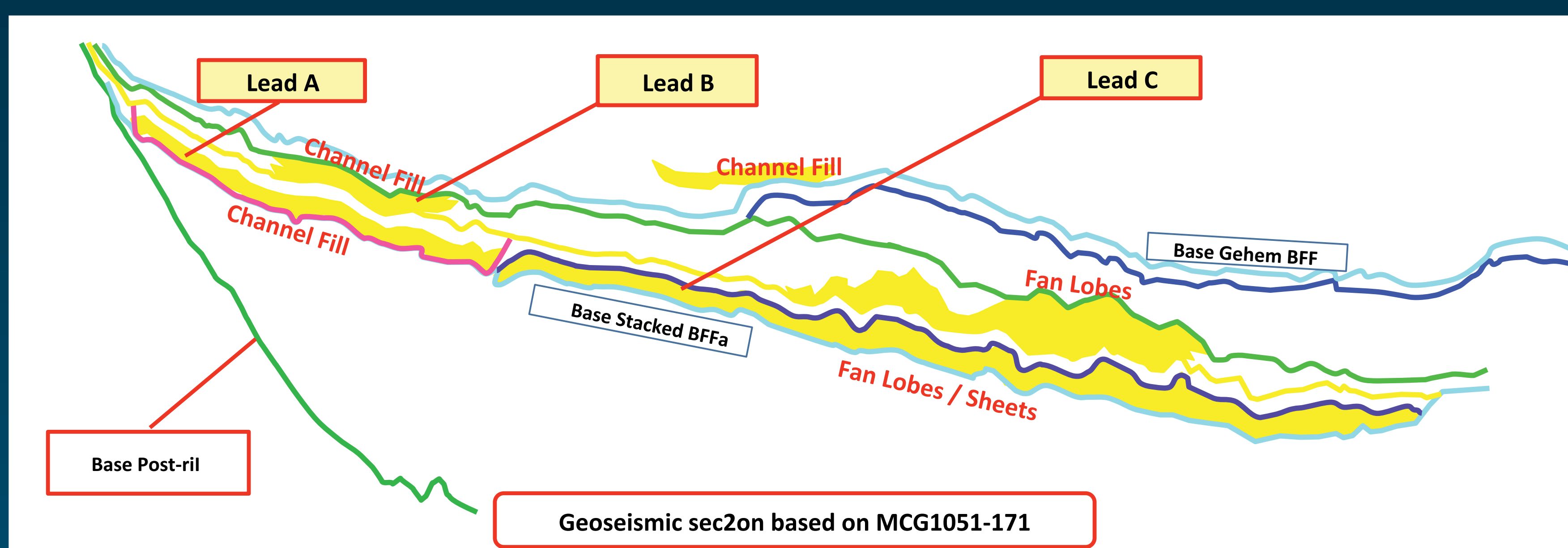
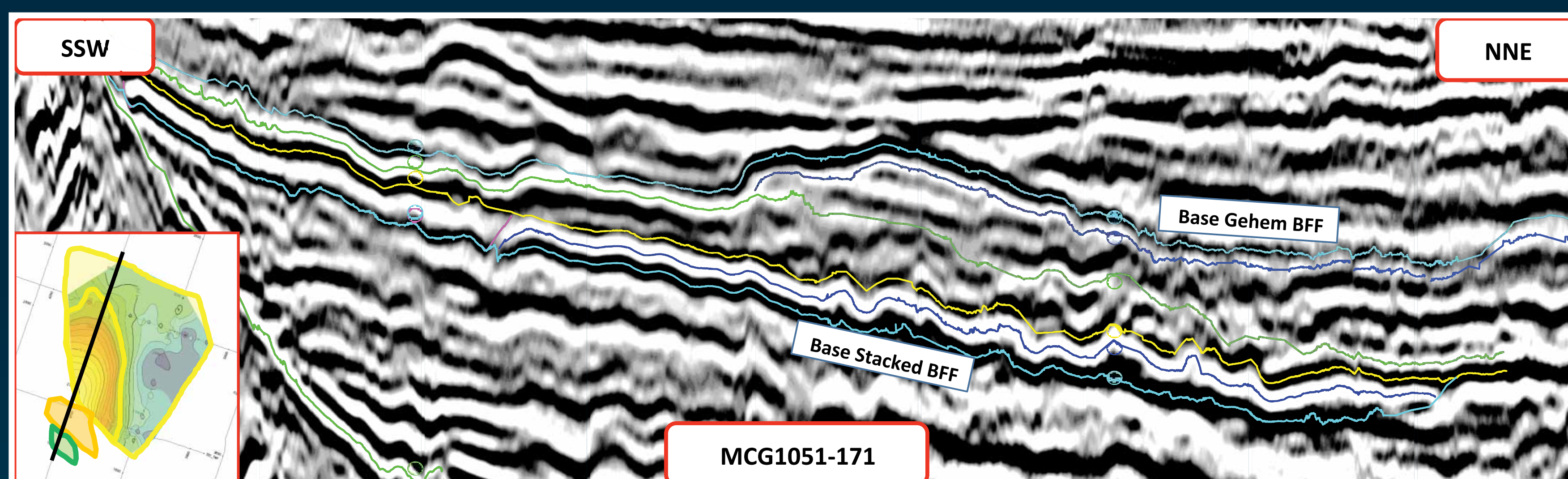


Makassar Regional Super-Tie Phase 1 Infill



- Covers high-graded area based on integrated interpretation, mapping and AVO investigation of submarine fans using the Makassar Regional Super-Tie (MCG 1051) full and angle stack datasets.
- Main imaging target is lower post-rift (interval containing Miocene submarine fans) and deeper sections.
- Tied to recently drilled wells
- Total – 2,205 km.
- ACQUIRING NOW. Final data available Q3 2012.

Interpretation, mapping and AVO investigation based on MCG1051 datasets



Robust AVO (Amplitude Variation with Offset) anomalies could be related to HC presence as these have been observed in the right geologic settings (with respect to expected reservoirs, seals and charge and mapped traps of the identified leads). These are fully covered by Phase 1 Infill.