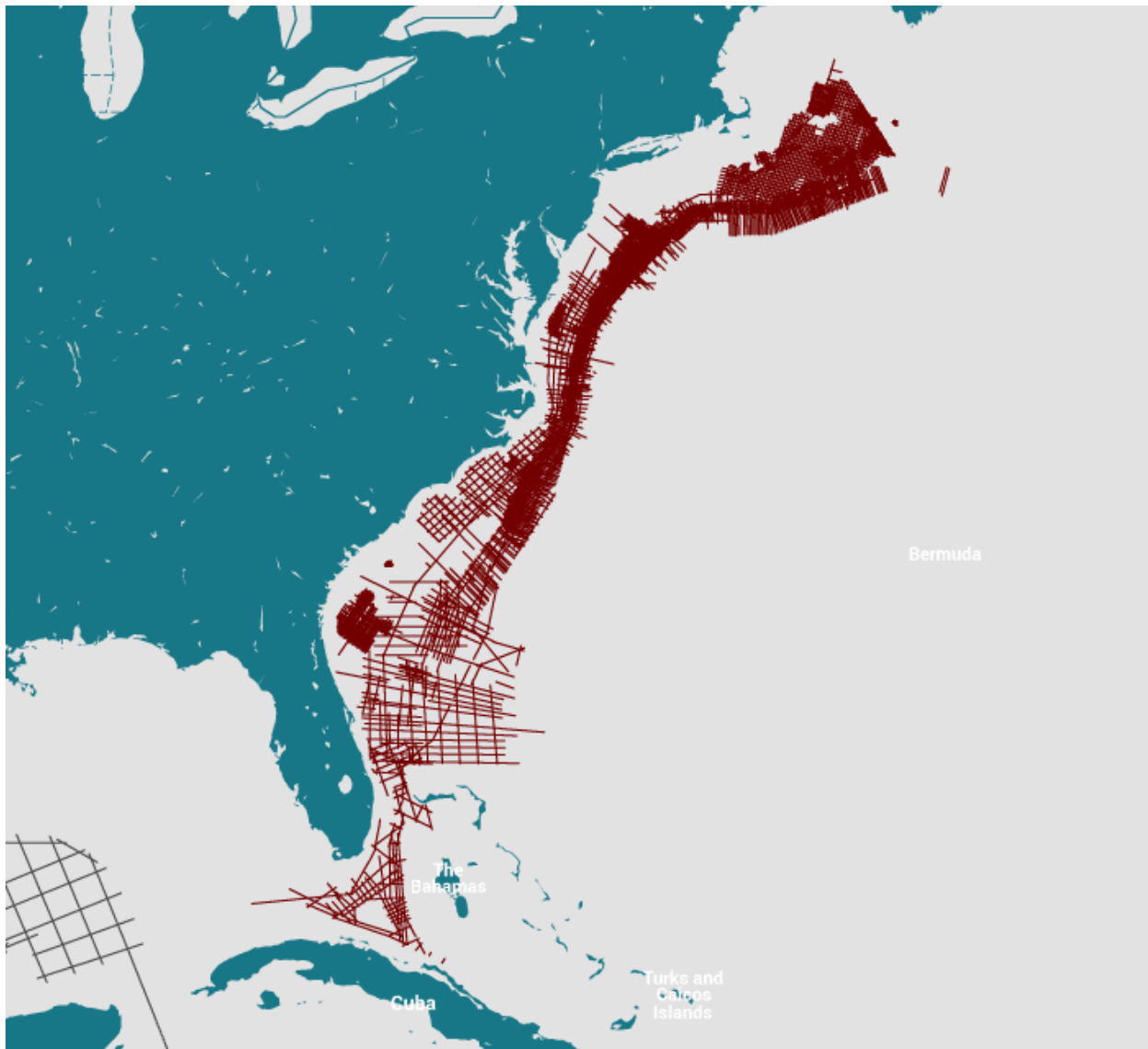


## East Coast US

The full dataset contains 166,000 km of 2D vintage seismic along the Eastern Seaboard of offshore USA, and was obtained from the BOEM (Bureau Ocean Energy Management). All data has been through rigorous quality control in a standard industry interpretation platform.

Please contact Kenneth W. Mohn for more information.

Kenneth W. Mohn  
Managing Director and Vice President MCG LLC  
Mob: +1 713 485 9696  
[kenneth.mohn@mcg.no](mailto:kenneth.mohn@mcg.no)



### Contact persons

**Kenneth W. Mohn**

Managing Director and Vice President MCG LLC

**Ryan Yarrington**

Marketing Representative

Mob: +1 713 485 9696  
[kenneth.mohn@mcg.no](mailto:kenneth.mohn@mcg.no)

Mob: +1 713 575 4134  
[ryan.yarrington@mcg.no](mailto:ryan.yarrington@mcg.no)